



Operating Instructions and Parts Manual

JWS Series Winch Stackers

Models JWS-550 and JWS-770



Model JWS-770 shown

WMH TOOL GROUP

2420 Vantage Drive
Elgin, Illinois 60124
Ph.: 800-274-6848
www.wmhtoolgroup.com

Part No. M-140500
Revision B 1/07
Copyright © WMH Tool Group

WARRANTY AND SERVICE

WMH Tool Group, Inc., warrants every product it sells. If one of our tools needs service or repair, one of our Authorized Service Centers located throughout the United States can give you quick service. In most cases, any of these WMH Tool Group Authorized Service Centers can authorize warranty repair, assist you in obtaining parts, or perform routine maintenance and major repair on your JET® tools. For the name of an Authorized Service Center in your area call 1-800-274-6848.

MORE INFORMATION

WMH Tool Group is consistently adding new products to the line. For complete, up-to-date product information, check with your local WMH Tool Group distributor, or visit jettools.com.

WARRANTY

JET products carry a limited warranty which varies in duration based upon the product (MW = Metalworking, WW = Woodworking).

90 DAY WARRANTY	1 YEAR WARRANTY	2 YEAR WARRANTY	5 YEAR WARRANTY	LIFE LIFETIME WARRANTY
Lathe Accessories Machine Accessories Mobile Bases Safety Equipment Specialty Items Vise Accessories	Air Tools- Contractor Air Tools-Industrial Air Tools-Light Industrial Lubrication	Body Repair Kits Bottle Jacks Cable Pullers Cold Saws Hoists-Air Hoists-Electric Metalforming Mill/Drills Milling Machines	MW Bandsaws MW Drill Presses MW Finishing Equipment MW Lathes MW Precision Vises Pallet Trucks Rigging Equip. Service Jacks	Stackers Surface Grinders Tapping Trolleys-Air Trolleys-Electric Web Slings Winches-Electric
Beam Clamps Chain Hoist- Manual Lever Hoists Pullers-JCH Models Scissor Lift Tables Screw Jacks Trolleys-Geared	Trolleys-Plain Winches-Manual WW Air Filtration WW Bandsaws WW Buffers WW Drill Presses WW Dust Collectors WW Dust Filters	WW Dust Fittings WW Jointers WW Lathes WW Planers WW Sanders WW Shapers WW Tablesaws	<i>Warranty reverts to 1 Year Warranty if woodworking (WW) products listed below are used for commercial, industrial or educational purposes</i>	
				Fastening Tools Mechanics Hand Tools Striking Tools Vises (non-precision) Clamps

WHAT IS COVERED?

This warranty covers any defects in workmanship or materials subject to the exceptions stated below. Cutting tools, abrasives and other consumables are excluded from warranty coverage.

WHO IS COVERED?

This warranty covers only the initial purchaser of the product.

WHAT IS THE PERIOD OF COVERAGE?

The general JET warranty lasts for the time period specified in the product literature of each product.

WHAT IS NOT COVERED?

Five Year Warranties do not cover woodworking (WW) products used for commercial, industrial or educational purposes. Woodworking products with Five Year Warranties that are used for commercial, industrial or education purposes revert to a One Year Warranty. This warranty does not cover defects due directly or indirectly to misuse, abuse, negligence or accidents, normal wear-and-tear, improper repair or alterations, or lack of maintenance.

HOW TO GET SERVICE

The product or part must be returned for examination, postage prepaid, to a location designated by us. For the name of the location nearest you, please call 1-800-274-6848.

You must provide proof of initial purchase date and an explanation of the complaint must accompany the merchandise. If our inspection discloses a defect, we will repair or replace the product, or refund the purchase price, at our option. We will return the repaired product or replacement at our expense unless it is determined by us that there is no defect, or that the defect resulted from causes not within the scope of our warranty in which case we will, at your direction, dispose of or return the product. In the event you choose to have the product returned, you will be responsible for the shipping and handling costs of the return.

HOW STATE LAW APPLIES

This warranty gives you specific legal rights; you may also have other rights which vary from state to state.

LIMITATIONS ON THIS WARRANTY

WMH TOOL GROUP LIMITS ALL IMPLIED WARRANTIES TO THE PERIOD OF THE LIMITED WARRANTY FOR EACH PRODUCT. EXCEPT AS STATED HEREIN, ANY IMPLIED WARRANTIES OR MERCHANTABILITY AND FITNESS ARE EXCLUDED. SOME STATES DO NOT ALLOW LIMITATIONS ON HOW LONG THE IMPLIED WARRANTY LASTS, SO THE ABOVE LIMITATION MAY NOT APPLY TO YOU.

WMH TOOL GROUP SHALL IN NO EVENT BE LIABLE FOR DEATH, INJURIES TO PERSONS OR PROPERTY, OR FOR INCIDENTAL, CONTINGENT, SPECIAL, OR CONSEQUENTIAL DAMAGES ARISING FROM THE USE OF OUR PRODUCTS. SOME STATES DO NOT ALLOW THE EXCLUSION OR LIMITATION OF INCIDENTAL OR CONSEQUENTIAL DAMAGES, SO THE ABOVE LIMITATION OR EXCLUSION MAY NOT APPLY TO YOU.

WMH Tool Group sells through distributors only. The specifications in WMH catalogs are given as general information and are not binding. Members of WMH Tool Group reserve the right to effect at any time, without prior notice, those alterations to parts, fittings, and accessory equipment which they may deem necessary for any reason whatsoever. JET® branded products are not sold in Canada by WMH Tool Group.

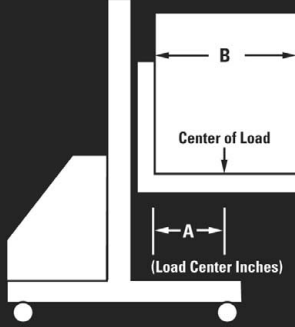
Warnings

- Read and understand all warnings and operating instructions before attempting to use the winch stacker.
- Do not exceed rated capacity.
- Do not allow anyone to sit or ride on fork, or enter area beneath forks.
- Always keep fingers, hands and feet clear of forks and mast when lowering load.
- Always secure load before raising or moving the stacker. Do not transport load in the raised position.
- Do not allow more than half of load to extend beyond load center of stacker.
- Always keep load close to mast.
- Do not transport load in the raised position.
- Use on level, smooth, finished floors only.
- Do not use on uneven or sloping floors.
- Always rotate winch handle slowly to allow load to descend in a cautious manner.
- Always use genuine factory replacement parts only.
- Failure to comply with all of these warnings may result in loss of load, damage to winch stacker, personal injury and/or property damage.

⚠ WARNING

1. Do not exceed rated load center capacity of 770 lbs.
2. Load center is measured horizontally from back of forks or back of platform (A).
3. Center of evenly distributed load should never exceed load center to ensure safe and balanced lifting (B).
4. Overall length of load should never be more than twice the load center.
5. Failure to comply with these warnings may result in tipping, loss of control and load, damage to stacker, personal injury and/or property damage.

⚠ CAUTION THIS UNIT HAS AN 18" LOAD CENTER



DO NOT REMOVE OR OBSCURE THIS LABEL

Table of Contents

Table of Contents	4
Specifications	4
Introduction	4
Assembly and Adjustment	5
Operation	5
Replacement Parts	5
JWS-550 Mast Assembly	6
Parts List: JWS-550 Mast Assembly	7
JWS-770 Mast Assembly	8
Parts List: JWS-770 Mast Assembly	9
JWS-550 and JWS-770 Drive Assembly	10
Parts List: JWS-550 and JWS-770 Drive Assembly	11

Specifications

Model Number	JWS-550	JWS-770
Stock Number	140500	140501
Capacity (lbs)	550	770
Pallet Capacity L x W (in)	N/A	48 x 40
Load Center (in)	12	18
Lifting Height (in)	59	59
Turning Radius (degrees / in)	360 / 31	360 / 31
Handle Rotations to Max. Height	33	33
Handle Force Required @ Max. Load (lbs)	14	16
Fork Dimensions L x W x H (in)	23 x 3 x 1-3/4	36 x 3 x 1-3/4
Minimum Fork Height (in)	3-1/2	3
Overall Fork Width Min/Max (in)	6-1/4 / 25-1/2	6-3/8 / 30
Outrigger Width (in)	N/A	2-3/8
Outrigger Height (in)	N/A	2-3/8
Outrigger Inside Width Min/Max (in)	N/A	33-1/2 / 49-1/2
Outrigger Outside Width Min/Max (in)	N/A	39 / 59
Load Wheel Material / OD x W (in)	Nylon / 3-1/4 x 2	Nylon / 3-1/4 x 2
Caster Material / OD x W (in)	Polyolefin / 6 x 1-1/4	Polyolefin / 6 x 1-1/4
Overall Size L x W x H (in)	38 x 26 x 73	52 x 39-1/2 x 73
Net Weight (lbs)	188	248

The above specifications were current at the time this manual was published, but because of our policy of continuous improvement, WMH Tool Group reserves the right to change specifications at any time and without prior notice, without incurring obligations.

Introduction

Congratulations on your purchase of a JET Winch Stacker.

Your winch stacker is designed to prevent lifting injuries by providing a stable, mobile lifting device for moderate to heavy loads. It is ideal for use in confined areas or narrow aisles.

The winch stacker is easy to operate with an adjustable length winch handle, smooth rolling, long lasting nylon load wheels, and a foot brake. An optional steel platform is available to convert your winch stacker to a mobile work station. It features heavy-duty welded steel construction with a durable powder coat finish to inhibit rust and provide years of dependable service.

Assembly and Adjustment

1. Remove all packing material from the stacker.
2. Locate the winch handle assembly that has been reversed for shipping purposes. Loosen the nut (A-Fig. 1) and pull handle (B-Fig. 1) from the base (C-Fig. 1). Reverse the handle and install into base as shown in the lower drawing. Tighten nut (A-Fig. 1).

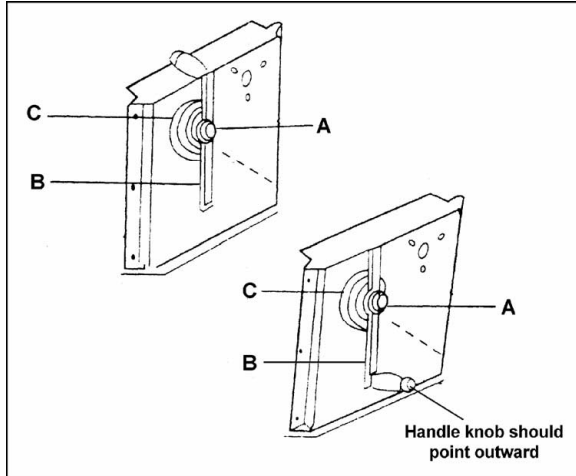


Figure 1

3. To assemble forks, unscrew socket head flat screw (#41, page 9 for JWS-550; #45, page 11 for JWS-770). Tap fork shaft out (#44, page 9 for JWS-550; #48, page 11 for JWS-770). Forks to be assembled must come from the same crate as the mast.
4. Align holes in forks (#42, page 9 for JWS-550; #46, page 11 for JWS-770) with holes in carriage (#43, page 9 for JWS-550; #47, page 11 for JWS-770) and tap fork shaft through carriage and fork holes.
5. Be sure assembled forks are even and parallel. Reinstall socket head flat in carriage to hold fork shaft in place.
6. To assemble outrigger legs for JWS-770, check to be sure that the legs to be assembled come from the same crate as the mast.

7. Insert outrigger legs (#13L and #13R, page 11) into square holes located in bottom of mast (#8, page 11). Align holes in legs with holes in mast to enable legs to be equal distance from mast.
8. Fasten legs to mast with 4 hex cap screws (#16), 4 lock washers (#15) and 4 hex nuts (#14, page 11). Tighten hex nuts firmly.

WARNING Do not overload the stacker. Use on finished, smooth and level floors only. Do not use on sloped or uneven floors.

Operation

1. Insert both forks evenly and completely under the load. Load must be distributed equally on both forks and toward the mast. Do not allow more than half the load to extend beyond load center. Do not lift load with fork tips only and do not lift unstable or loose load.
2. Turn the winch handle clockwise to raise the load. When forks reach maximum height, the winch will stop. Do not exceed maximum lifting height.
3. Use both hands with a firm grip to push and steer the stacker on level, smooth finished floors only. Keep all people clear from stacker while lifting and transporting load.
4. To lower the load, carefully turn the handle counterclockwise to enable the load to lower in a cautious manner.

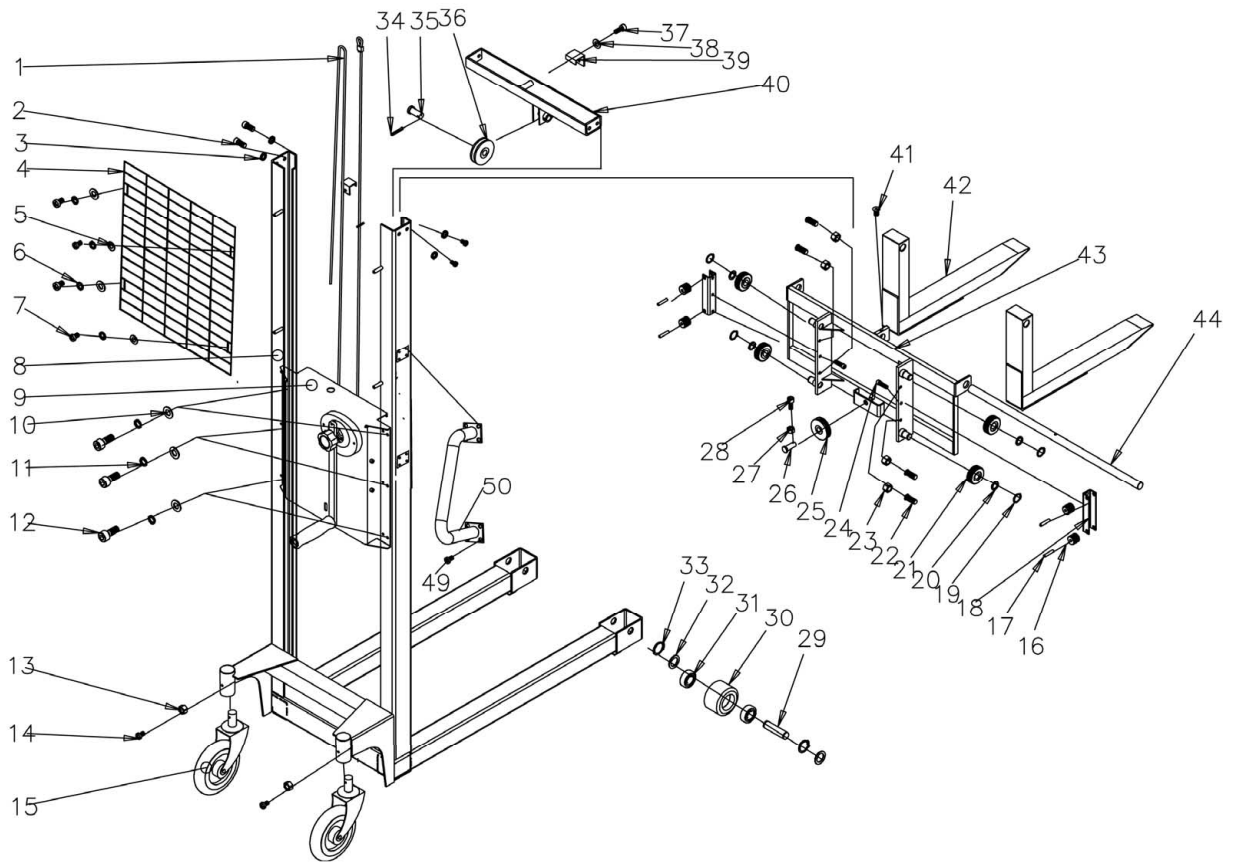
CAUTION: When not in use, do not allow heavy loads to remain on the forks for an extended period of time.

For optimum performance, the drive chain (#37, page 6) located inside the drive assembly should be lubricated regularly.

Replacement Parts

Replacement parts are listed on the following pages. To order parts or reach our service department, call 1-800-274-6848 between 7:30 a.m. and 6:00 p.m. (CST), Monday through Friday. Having the Model Number and Serial Number of your machine available when you call will allow us to serve you quickly and accurately.

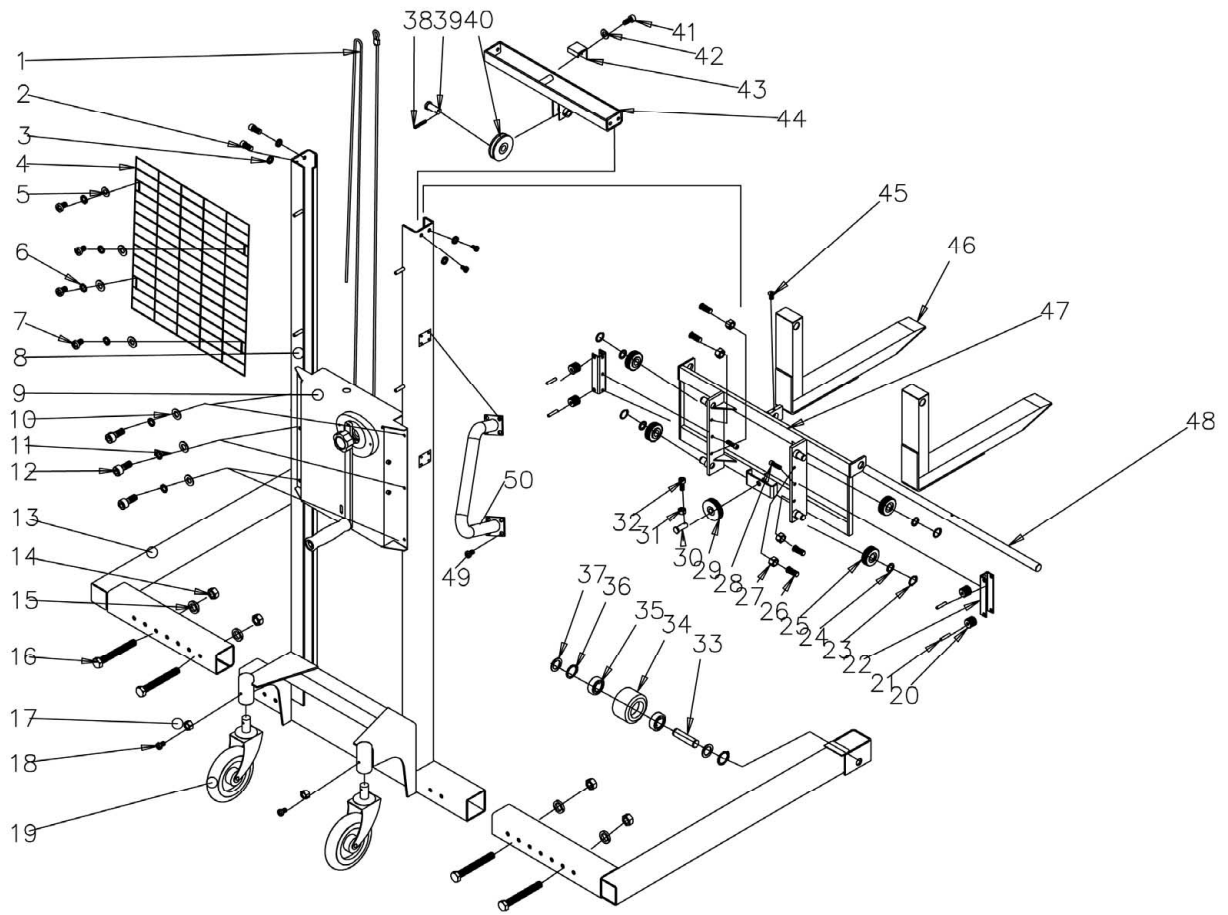
JWS-550 Mast Assembly



Parts List: JWS-550 Mast Assembly

Index No.	Part No.	Description	Size	Qty
1	JWS-02-01	Wire Assembly		1
2	TS-1504031	Socket Head Cap Screw	M8 x 16	4
3	TS-1551061	Lock Washer	M8	4
4	JWS-02-04	Steel Fence		1
5	TS-1550031	Flat Washer	M5	4
6	TS-1551031	Lock Washer	M5	4
7	TS-1533032	Phillips Pan Head Machine Screw	M5 x 10	4
8	JWS-02-08	Mast Assembly		1
9	JWS-01	Drive Assembly		1
10	TS-1550041	Flat Washer	M6	6
11	TS-1551041	Lock Washer	M6	6
12	TS-1503021	Socket Head Cap Screw	M6 x 10	6
13	TS-1540031	Hex Nut	M5	2
14	TS-1533032	Phillips Pan Head Machine Screw	M5 x 10	2
15	JWS-02-15	Caster Assembly	Ø160 x 32	2
	BB-6001ZZ	Ball Bearing	6001ZZ	4
16	JWS-02-16	Side Roller	Ø29 x Ø8.6 x 27	4
17	JWS-02-17	Spring Pin	Ø8 x 40	4
18	JWS-02-18	Side Roller Bracket		2
19	JWS-02-19	Snap Ring	M20	4
20	JWS-02-20	Mast Roller Washer		4
21	JWS-02-21	Mast Roller (Nylon)	Ø60 x Ø20.5 x 22.5	4
22	TS-1515021	Socket Head Flat Screw	M8 x 20	4
23	TS-1540061	Hex Nut	M8	4
24	TS-1504051	Socket Head Cap Screw	M8 x 25	2
25	JWS-02-25	Wire Pulley	Ø72 x Ø16.2 x 19	1
26	JWS-02-26	Pulley Pin	Ø16 x 46	1
27	TS-1540041	Hex Nut	M6	1
28	TS-1503041	Socket Head Cap Screw	M6 x 16	1
29	JWS-02-29	Load Wheel Pin	Ø20 x 79	2
30	JWS-02-30	Load Wheel	Ø82 x 55	2
31	BB-6204ZZ	Ball Bearing	6204ZZ	4
32	JWS-02-32	Load Wheel Washer		4
33	JWS-02-19	Snap Ring	M20	4
34	JWS-01-52	Spring Pin	Ø4 x 25	1
35	JWS-02-35	Pulley Pin	Ø16 x 42	1
36	JWS-02-25	Wire Pulley	Ø72 x Ø16.2 x 19	1
37	TS-1503031	Socket Head Cap Screw	M6 x 12	1
38	TS-1551041	Lock Washer	M6	1
39	JWS-02-39	Wire Lock		1
40	JWS-02-40	Mast Cross Bar		1
41	TS-2246101	Socket Head Flat Screw	M6 x 10	1
42	JWS-02-42	Fork		2
43	JWS-02-43	Carriage		1
44	JWS-02-44	Fork Shaft	Ø20 x 664	1
49	TS-1503021	Socket Head Cap Screw	M6 x 10	16
50	JWS-03-50	Rubber Grip Handle		2
	JWS-FW	Fork Warning Label		1
	PT2748J-JET	JET Logo Label		2

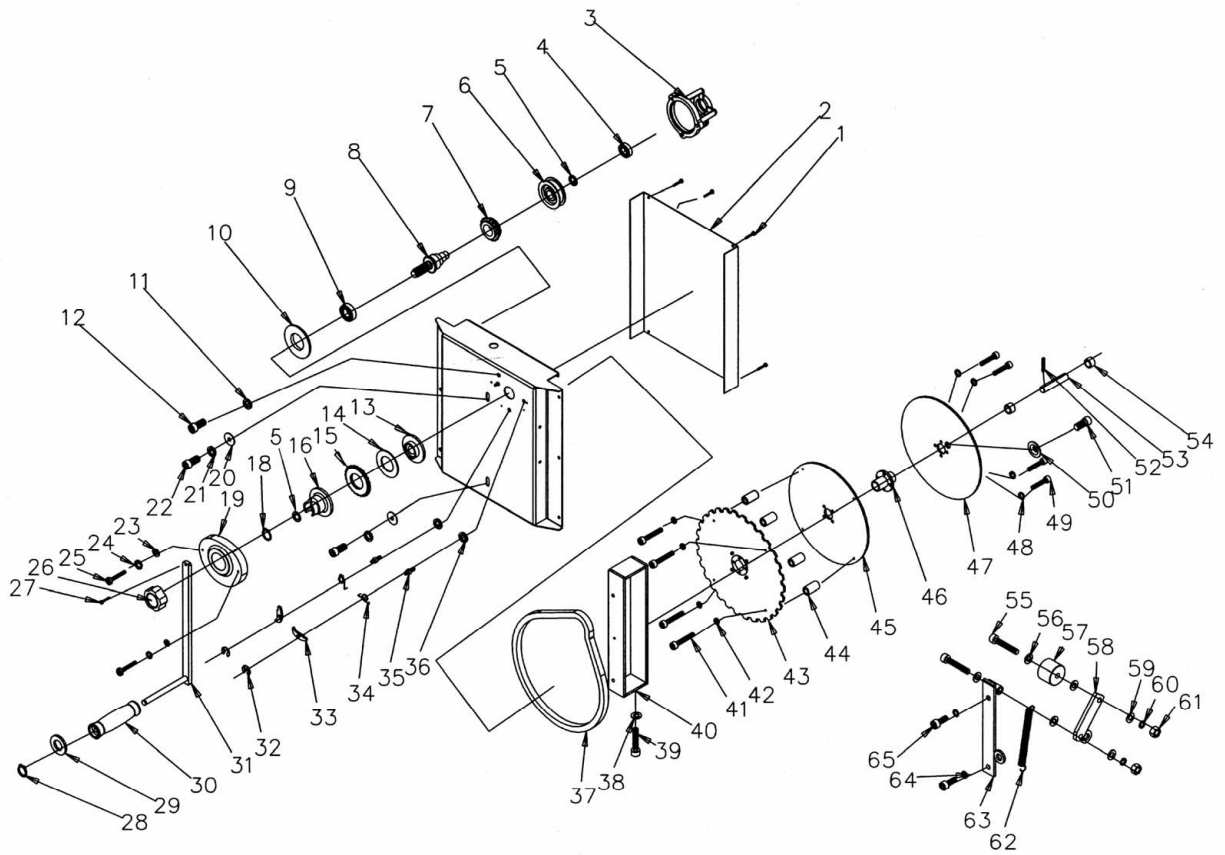
JWS-770 Mast Assembly



Parts List: JWS-770 Mast Assembly

Index No.	Part No.	Description	Size	Qty
1	JWS-02-01	Wire Assembly		1
2	TS-1504031	Socket Head Cap Screw	M8 x 16	4
3	TS-1551061	Lock Washer	M8	4
4	JWS-02-04	Steel Fence		1
5	TS-1550031	Flat Washer	M5	4
6	TS-1551031	Lock Washer	M5	4
7	TS-1533032	Phillips Pan Head Machine Screw	M5 x 10	4
8	JWS-03-08	Mast Assembly		1
9	JWS-01	Drive Assembly		1
10	TS-1550041	Flat Washer	M6	6
11	TS-1551041	Lock Washer	M6	6
12	TS-1503021	Socket Head Cap Screw	M6 x 10	6
13L	JWS-03-13L	Outrigger Leg Left		1
13R	JWS-03-13R	Outrigger Leg Right		1
14	TS-1540071	Hex Nut	M10	4
15	TS-1551071	Lock Washer	M10	4
16	TS-2239801	Hex Cap Screw	M10 x 80	4
17	TS-1540031	Hex Nut	M5	2
18	TS-1533032	Phillips Pan Head Machine Screw	M5 x 10	2
19	JWS-02-15	Caster Assembly	Ø160 x 32	2
	BB-6001ZZ	Ball Bearing	6001ZZ	4
20	JWS-02-16	Side Roller	Ø29 x Ø8.6 x 27	4
21	JWS-02-17	Spring Pin	Ø8 x 40	4
22	JWS-02-18	Side Roller Bracket		2
23	JWS-02-19	Snap Ring	M20	4
24	JWS-02-20	Mast Roller Washer		4
25	JWS-02-21	Mast Roller	Ø60 x Ø20.5 x 22.5	4
26	TS-1515021	Socket Head Flat Screw	M8 x 20	4
27	TS-1540061	Hex Nut	M8	4
28	TS-1504051	Socket Head Cap Screw	M8 x 25	2
29	JWS-02-25	Wire Pulley	Ø72 x Ø16.2 x 19	1
30	JWS-02-26	Pulley Pin	Ø16 x 46	1
31	TS-1540041	Hex Nut	M6	1
32	TS-1503041	Socket Head Cap Screw	M6 x 16	1
33	JWS-02-29	Load Wheel Pin	Ø20 x 79	2
34	JWS-02-30	Load Wheel	Ø82 x 55	2
35	BB-6204ZZ	Ball Bearing	6204ZZ	4
36	JWS-02-32	Load Wheel Washer		4
37	JWS-02-19	Snap Ring	M20	4
38	JWS-01-52	Spring Pin	Ø4 x 25	1
39	JWS-02-35	Pulley Pin	Ø16 x 42	1
40	JWS-02-36	Wire Pulley	Ø72 x Ø16.2 x 19	1
41	TS-1503031	Socket Head Cap Screw	M6 x 12	1
42	TS-1551041	Lock Washer	M6	1
43	JWS-02-39	Wire Lock		1
44	JWS-02-40	Mast Cross Bar		1
45	TS-2246101	Socket Head Flat Screw	M6 x 10	1
46	JWS-03-46	Fork		2
47	JWS-03-47	Carriage		1
48	JWS-03-48	Fork Shaft	Ø25 x 775	1
49	TS-1503021	Socket Head Cap Screw	M6 x 10	16
50	JWS-03-50	Rubber Grip Handle		2
	JWS-FW	Fork Warning Label		1
	PT2748J-JET	JET Logo Label		2

JWS-550 and JWS-770 Drive Assembly



Parts List: JWS-550 and JWS-770 Drive Assembly

Index No.	Part No.	Description	Size	Qty
1	JWS-01-01	Self-Tapping Screw	M4.8 x 16	4
2	JWS-01-02	Cover		1
3	JWS-01-03	Brake Base		1
4	BB-6003ZZ	Ball Bearing	6003ZZ	1
5	JWS-01-05	Washer	Ø25 x Ø17 x 2	2
6	JWS-01-06	Idler	Ø70 x Ø20 x 20	1
7	JWS-01-07	Free Wheel		1
8	JWS-01-08	Input Shaft		1
9	BB-6004ZZ	Ball Bearing	6004ZZ	1
10	JWS-01-10	Bearing Case		1
11	TS-1551061	Lock Washer	M8	1
12	TS-1504031	Socket Head Cap Screw	M8 x 16	1
13	JWS-01-13	Friction Disc		1
14	JWS-01-14	Lining		1
15	JWS-01-15	Ratchet Wheel		1
16	JWS-01-16	Handle Base		1
18	JWS-01-18	Snap Ring	M16	1
19	JWS-01-19	Brake Cover		1
20	JWS-01-20	Washer	Ø31.5 x Ø9 x 1.5	2
21	TS-1551061	Lock Washer	M8	2
22	TS-1504031	Socket Head Cap Screw	M8 x 16	2
23	TS-1550021	Flat Washer	M4	2
24	TS-1551021	Lock Washer	M4	2
25	TS-2284252	Phillips Pan Head Machine Screw	M4 x 25	2
26	JWS-01-26	Handle Nut		1
27	JWS-01-27	Self-Tapping Screw	M4.8 x 8	1
28	JWS-01-28	Snap Ring	M12	1
29	TS-2360121	Flat Washer	M12	1
30	JWS-01-30	Handle Knob		1
31	JWS-01-31	Handle Arm		1
32	JWS-01-32	E-Ring	M6	2
33	JWS-01-33	Ratchet		2
34	JWS-01-34	Ratchet Spring		2
35	JWS-01-35	Ratchet Bolt		2
36	TS-1551061	Lock Washer	M8	2
37	JWS-01-37	Drive Chain		1
38	TS-1550061	Flat Washer	M8	1
39	TS-1504051	Socket Head Cap Screw	M8 x 25	1
40	JWS-01-40	Wire Drum Case		1
41	TS-1502071	Socket Head Cap Screw	M5 x 30	4
42	TS-1551031	Lock Washer	M5	4
43	JWS-01-43	Sprocket		1
44	JWS-01-44	Spacer		4
45	JWS-01-45	Drum Plate		1
46	JWS-01-46	Connector		1
47	JWS-01-47	Drum Plate		1
48	TS-1551041	Lock Washer	M6	4
49	TS-1503071	Socket Head Cap Screw	M6 x 30	4
50	JWS-01-50	Wire Lock		1
51	TS-1504031	Socket Head Cap Screw	M8 x 16	1
52	JWS-01-52	Spring Pin	Ø4 x 25	1
53	JWS-01-53	Wire Drum Pin		1
54	JWS-01-54	Spacer	Ø16 x Ø20 x 14	2
55	TS-1503081	Socket Head Cap Screw	M6 x 35	2
56	TS-1550041	Flat Washer	M6	2
57	JWS-01-57	Roller	Ø25 x Ø6.1 x 20	1

58.....	JWS-01-58.....	Roller Bracket.....		1
59.....	TS-1550041.....	Flat Washer.....	M6.....	2
60.....	TS-1551041.....	Lock Washer.....	M6.....	2
61.....	TS-1540041.....	Hex Nut.....	M6.....	2
62.....	JWS-01-62.....	Spring.....		1
63.....	JWS-01-63.....	Bracket.....		1
64.....	TS-1551041.....	Lock Washer.....	M6.....	2
65.....	TS-1503021.....	Socket Head Cap Screw.....	M6 x 10.....	2
.....	JWS550-ID.....	ID/Warning Label (JWS-550).....		1
.....	JWS770-ID.....	ID/Warning Label (JWS-770).....		1
.....	JWS-LCW.....	Load Center Warning Label.....		1